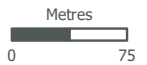
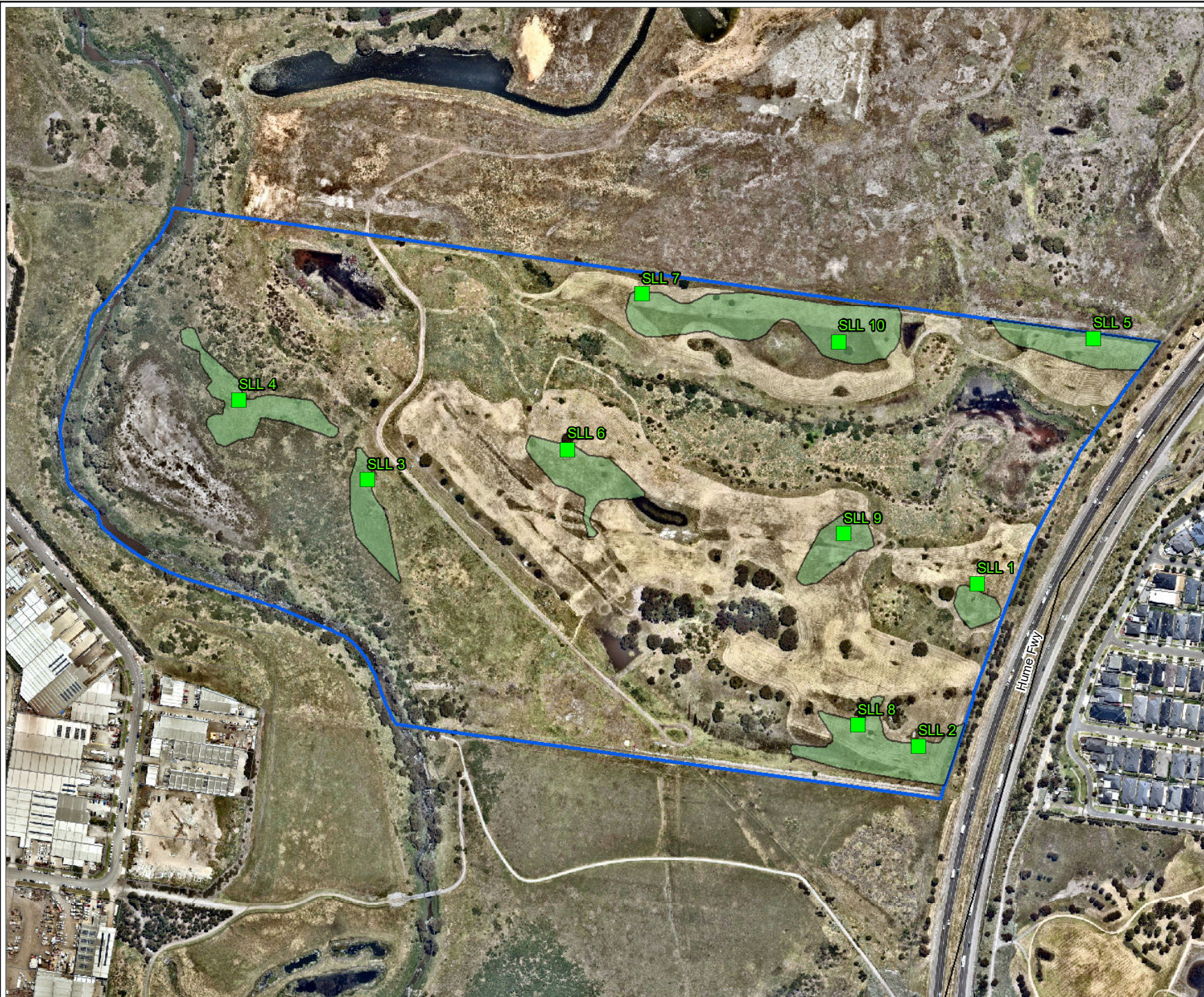


Figure 1: Location of SLL grids

Project No.: 22076.10
Project: 485 Cooper Street Epping
Date: 7/12/2023

- Site
- Native vegetation
- SLL tile grid location (20X50m)



PO Box 337, Camberwell, VIC 3124, Australia
www.natureadvisory.com.au
03 9815 2111 - info@natureadvisory.com.au